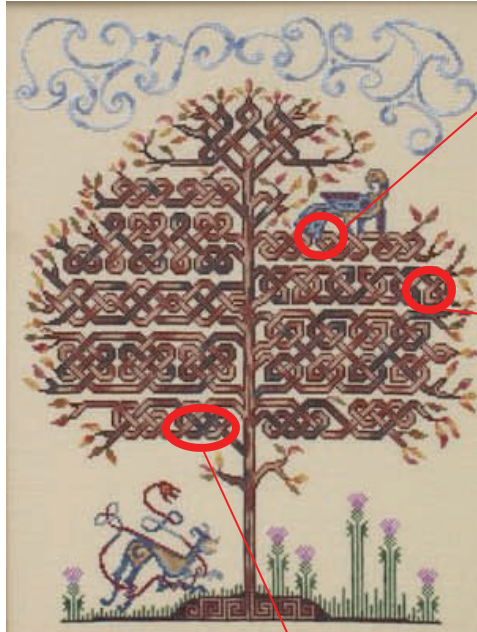


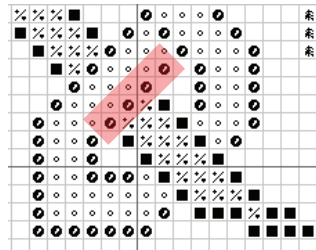
Corrections to the Tanglewood graph



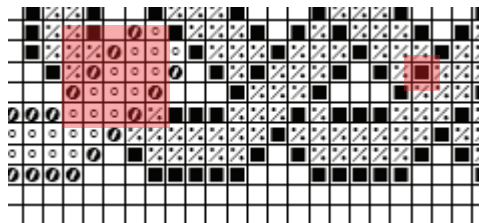
Under his tail—missing one Rosewood stitch



Second branch down on the right—Four stitches shown as Cajun Coffee should be Rosewood



Lowest left branch—rosewood path gets thin **and** one Cajun Coffee stitch was coded as Double Fudge Brownie



I apologize for the different symbols used here, but the chart was completely re-inputted by the JustCross Stitch staff using symbols that I don't have in my program. My key

~ Tracy

Symbol Color

⌘	Double Fudge Brownie
●	Navy
(Antique Gold
∞	Blue Dreams
◆	Boysenberry
■	Cajun Coffee
×	Country Blue
♥	Masquerade
○	Mud Pie
#	Thanksgiving
⊠	Valley Green
●	Rosewood

Updated October 1, 2007